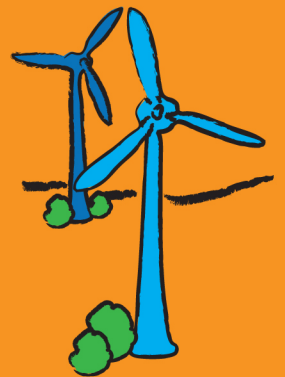
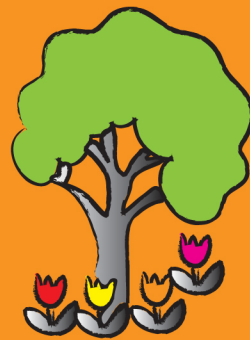


Barnsley Community Infrastructure Levy (CIL)

Section 106 Collection Rates
September 2016



BARNSLEY
Metropolitan Borough Council

Barnsley Metropolitan Borough Council Community Infrastructure Levy Section 106 Collection Rates

Introduction

This document has been created in order to provide an overview of historic S106 collection rates for the period 01/04/2012 to 31/03/2016.

Collection Rates

The table shown below provides a summary of S106 monies received over the last four financial years broken down by contribution type.

Contribution Type	2012/2013	2013/2014	2014/2015	2015/2016	Total
Affordable Housing	£0	£453,000	£155,000	£631,260	£1,239,260.00
Community Facilities	£0	£0	£0	£70,000	£70,000.00
Education	£0	£0	£150,000	£460,072	£610,072.00
Greenspace	£0	£5,000	£108,000	£0	£113,000.00
Highways	£0	£5,000	£54,250	£70,000	£129,250.00
Public Open Space	£176,518	£592,988	£404,888	£573,412	£1,747,806.00
Travel Plan Contribution	£0	£0	£0	£76,950	£76,950.00
Total	£176,518.00	£1,055,988.00	£872,138.00	£1,881,694.00	£3,986,338.00